

The Current: November 2025

From Susquehanna Greenway Partnership <info=susquehannagreenway.org@tbmail2.com>
on behalf of
Susquehanna Greenway Partnership <info@susquehannagreenway.org>
Date Thu 11/13/2025 9:18 AM



NOVEMBER 2025

[FACEBOOK](#)

[INSTAGRAM](#)

[EMAIL](#)

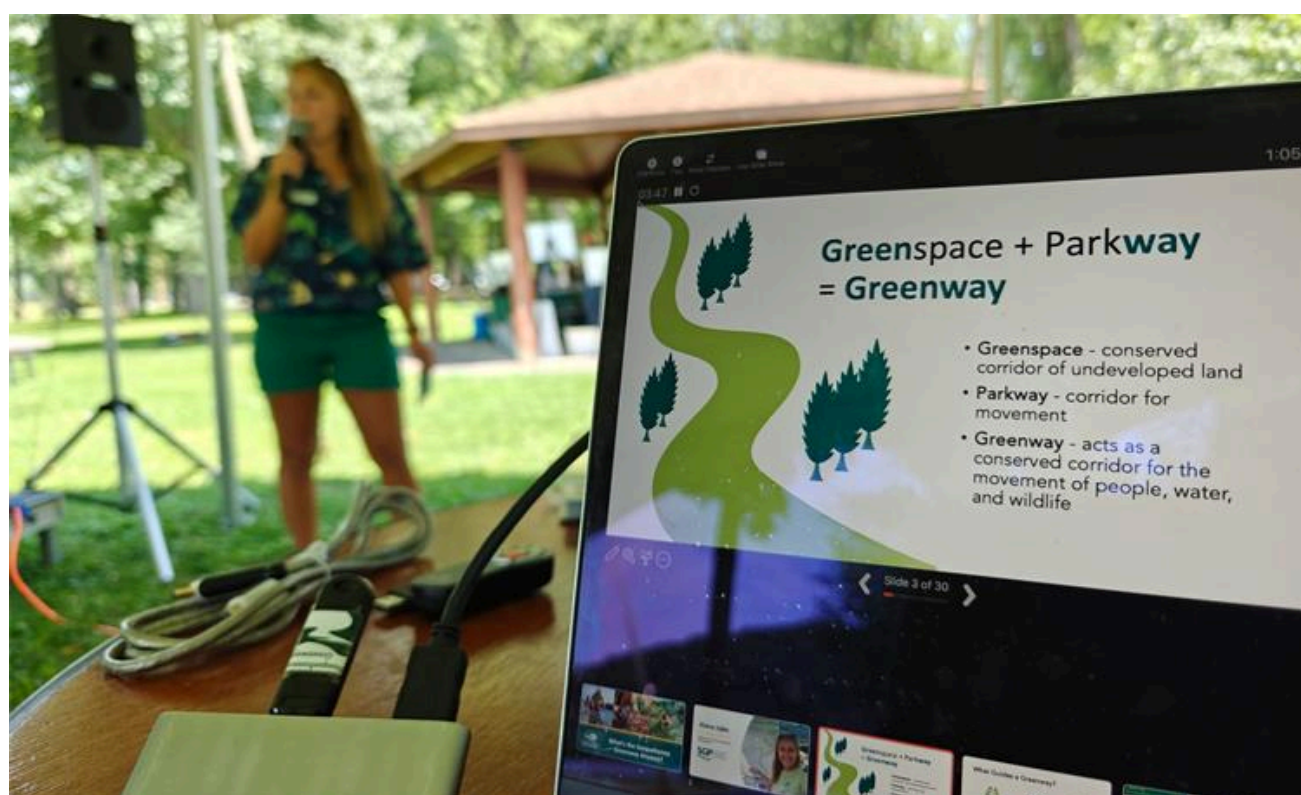
[DONATE](#)

EDUCATION & OUTREACH



It's that time of year again: brown season. Daylight is limited, and the skies are often low and gray. Although you may be tempted to grab the nearest blanket and sink deep into your couch for a long winter's nap, there are still many ways to get out and experience Susquehanna Greenway. [LEARN MORE](#)

REQUEST A PRESENTATION



Have a group, club, or organization that would like to learn more about the projects, programs, and opportunities of the Susquehanna Greenway? SGP is accepting presentation requests for 2026. We will give an overview of the Greenway, its resources, and how to plan your next outdoor adventure. If interested, please email Alana Jajko at ajajko@susquehannagreenway.org.

VISIT OUR TRAVELING PHOTO GALLERY



OCT 20 - NOV 21: [The Exchange Gallery](#), Bloomsburg
DECEMBER: [The Public Library for Union County](#), Lewisburg
JANUARY: [Bald Birds Brewing Company](#), Jersey Shore



Celestial Happenings
ON THE SUSQUEHANNA GREENWAY
NOVEMBER - DECEMBER 2025

DECEMBER SOLSTICE
Dec 21
Shortest day of the year & longest shadows

METEOR SHOWERS
Leonids: Nov. 16 - 17
Geminids: Dec. 13 - 14
Ursids: Dec. 22 - 23
(peak visibility)

NORTHERN LIGHTS
Aurora Borealis
Check the Kp forecast

URANUS AT BRIGHTEST
Nov 21
(peak brightness)

COLD MOON
Dec 4
December's full moon
AKA Long Night Moon

SUSQUEHANNA GREENWAY

As the days grow shorter and temperatures drop, don't retreat indoors just yet—the night sky along the Susquehanna Greenway is putting on a show. Bundle up, step outside, and rediscover the wonder of the Susquehanna after dark. Here are a few nighttime events worth watching for this season. [LEARN MORE](#)

TRAILS

SGP IN THE FIELD

Now that event season is over, what does SGP even do? Grants, conferences, planning for next year...but also a few field trips!

Using a new immersion strategy, SGP is updating our trail profiles with 360 degree technology, so you know what to expect before you hit the trail. Here's a recent field trip we took to [Vosburg Neck State Park](#). Check out the freshly updated [trail profile](#) and let us know what you think! (feedback form near the bottom of the profile)



FEEDBACK NEEDED

Once you've checked out Vosburg, we'd also love feedback on...

[Shikellamy State Park](#)
[James P. Bressler Heritage Trail](#)
[Hawk Rock Overlook Trail](#)
[Wildwood Park](#)
[Schull's Rock Overlook Trail](#)



Hey there, DOG OWNERS! 🐕 What's your favorite pet-friendly trail—and why does your pup love it? 🐕💚

Help us out! It's one of the most-asked questions when we meet & greet with the public, and we'd love to create a resource based on feedback directly from dog owners. Click above to comment on the Facebook post with your suggestions or email ajajko@susquehannagreenway.org.



BE SEEN

Outdoors This Fall





Hikers should wear at least one piece of hunter orange viewable from all directions such as a hat, jacket, or vest. Also, cover your backpack with orange.



Don't forget your pets! Dogs should wear hunter orange or another visible color vest, leash, harness, or bandanna.



Horseback riders also should wear a hunter orange vest or hat, and use a hunter orange vest or rump sheet on your horse.





FRIENDLY REMINDER

If you're paddling the Susquehanna River this autumn, don't forget your life jacket! Between November 1st and April 30th, anyone out on Pennsylvania waters is required to wear a U.S. Coast Guard Approved life jacket.

RIVER TOWNS

JERSEY SHORE: A GATEWAY TO TRAILS

Could the quaint borough of Jersey Shore, PA become a blossoming trail-town hub? A [recent interview](#) with outdoor-tourism consultant Amy Camp explored how the community can leverage its proximity to the Pine Creek Rail Trail and the Susquehanna River to boost trail-based economy and local character.



OUTDOOR NEWS



NOMINATIONS OPEN FOR RIVER OF THE YEAR



[180 ACRES CONSERVED IN YORK COUNTY](#)



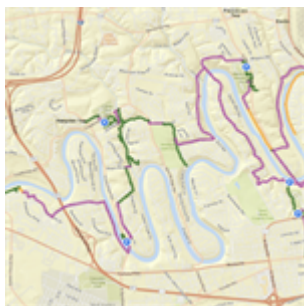
[350+ FISH RESCUED FROM POOLS IN SUSQUEHANNA](#)



[LUMBER HERITAGE REGION ANNOUNCES INTERACTIVE QUESTS](#)



[KEYSTONE TRAILS ASSOCIATION IS HIRING](#)



[NEW ONLINE MAP AVAILABLE FOR THE CONODOGUINET GREENWAY](#)

GRANTS & OPPORTUNITIES

[DEP Environmental Education Grants](#) | *November 14 Deadline*

Administered by the Department of Environmental Protection, the Environmental Education Grants Program funds projects like hands-on student programs, teacher workshops, and community conservation efforts. Educators, schools, nonprofits, businesses, and more can apply to help people of all ages learn to care for our natural environment. [LEARN MORE](#).

[Canoe Access Development Fund](#) | *November 17 Deadline*

The Western Pennsylvania Conservancy's Canoe Access Development Fund helps to make the region's rivers and streams more accessible for outdoor recreation such as canoeing, kayaking and fishing. The fund goes toward watershed groups, conservation organizations, paddle clubs, agencies and other eligible parties to develop canoe and kayak access sites across Western Pennsylvania. [LEARN MORE](#).

[T-Mobile Hometown Grants](#) | *December 31 Deadline*

T-Mobile Hometown Grants is a \$25 million, five-year initiative to support the people and organizations who help small towns across America thrive and grow. Hometown Grants are given every quarter to up to 25 small towns. Apply for funding to support a community project of your choice, like revitalizing or repurposing a historic structure, creating a downtown asset or destination, or improving a space where friends and neighbors gather. Projects that add to a sense of place or could lead to further investment are of particular interest. [LEARN MORE](#).

[NPS Challenge Cost Share Award Program](#) | *January 10 Deadline*

Matching awards of up to \$25,000 are available for a range of project ideas that support Community Resiliency, Conservation Projects (land & water), and Outdoor Recreation in our National Parks, National Trails, and/or Wild and Scenic Rivers. This is a great opportunity to partner with your local national park site! [LEARN MORE](#).

Statewide Waterway Access Grant | Rolling Basis

Funds community-driven projects that address climate challenges & reduce pollution while strengthening communities through thoughtful implementation. [LEARN MORE](#).

Community Heart & Soul Seed Grant Program | Rolling Basis

Administered by The Pennsylvania Humanities Council (PHC) and Community Heart & Soul, this program seeks to help PA small cities, townships, and boroughs to implement the Community Heart & Soul model by providing \$10,000 matching grants to resident-led groups in communities with populations of 2,500 to 30,000. [LEARN MORE](#).

Peer & Circuit Rider Grants | Open Year-Round

These DCNR grant programs fund projects that help municipalities, counties, multi-municipal partnerships, and council of governments to increase local capacity for recreation, parks, and conservation. [LEARN MORE](#).

ABOUT THE SUSQUEHANNA GREENWAY



The Susquehanna Greenway is a connected corridor of paddling, walking, and biking trails, boat launches, conserved lands, and communities that runs along the Susquehanna River in PA.



The Susquehanna Greenway Partnership (SGP) is a 501(c)3 non-profit dedicated to advancing the vision of the Susquehanna Greenway. SGP works with partners to grow the network, inspire people to engage with the outdoors, and transform communities into places where people want to live, work, and explore.



WAYS TO SUPPORT THE SUSQUEHANNA GREENWAY



[Donate Directly](#)



[Photograph the Greenway](#)



[Become an Ambassador](#)



[Become a Steward](#)



[Visit the SGP Store](#)

SPECIAL THANK YOU TO OUR SUPPORTERS





[Susquehanna Financial](#)
[Strategies Group - Ameriprise Financial](#)



LET'S STAY CONNECTED!



Forwarded this email? Sign up to receive news of the Susquehanna Greenway [here](#).

[To safely unsubscribe, please click here](#) | [Spam Policy](#)

This email was sent to ajajko@susquehannagreenway.org by info@susquehannagreenway.org
Susquehanna Greenway Partnership | 301 Market Street, Unit 649 | Lewisburg | PA | 17837

