



FEBRUARY 2021

[FACEBOOK](#)

[INSTAGRAM](#)

[EMAIL](#)

[DONATE](#)

---

## Education & Outreach

---

### Wine, Reptiles, & Photos, Oh My!

Registration is now open for *Susquehanna Scenes, Sips, and SCALES* at Clyde Peeling's Reptiland! Enjoy a walk through the interactive zoo exhibits as you sip a local wine and view the winning images of our traveling gallery and photo contest.

**When:** May 7, 2021, 6-8 PM

**Where:** [Clyde Peeling's Reptiland](#)  
18628 US-15, Allenwood, PA 17810

**What:** Wine, food, photography, & reptiles!

**Tickets:** \$25 / individual

Tickets are sure to go fast. Click below to purchase yours today!



---

## ARTICLE FEATURES

---



### [Winter Outdoor Photography Tips](#)

It's never too early to #GetOutontheGreenway and start capturing photos for entry in our 10th Annual Photo Contest. Before you go, take a look at these great tips to help you snap some stunning winter wonderlands.

[LEARN MORE](#)

### [Birdwatching in Your Backyard](#)

This year, February 12-15 marks the 24th annual Great Backyard Bird Count. Get ready for the event with these insights from a seasoned birdwatcher and member of the Lycoming Audubon Society.

[LEARN MORE](#)

### [New Ways to Get Outdoors in Winter](#)

Just because it's cold outside, doesn't mean we stop exploring! Need a little help? Here are some incentives to get outside after the leaves have fallen.

[LEARN MORE](#)

---

# Trails

---

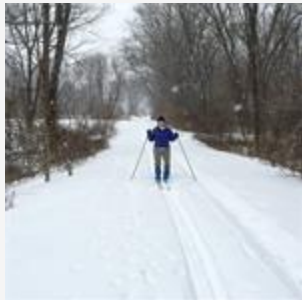
## Get Out on the Greenway! On the First Rail Trail in the U.S.

Did you know that you can walk, bike, or run on the VERY FIRST rail trail in the U.S. right here in the Susquehanna Greenway? Join us as we explore a trail with a history in the SGP River Town of Danville.

EXPLORE



## GET OUT ON THE GREENWAY



### Trail Spotlight: Susquehanna Warrior Trail

Here's a trail that's just as fun in the snow! The Susquehanna Warrior Trail, nestled in the Susquehanna Valley, traverses Columbia and Luzerne counties and is a popular spot for cross-country skiing in the winter.

LEARN MORE



### Explore the Online Interactive Map

Need a little help planning your next adventure? Use our Online Susquehanna Greenway Interactive Map to explore trails, river accesses, river towns, and more!

LEARN MORE

---

# River Towns

---

## Calling All Susquehanna Greenway River Towns



SGP is looking for communities throughout the Greenway who are interested in participating in the 2021 River Towns Cleanup during the week of April 17-25 in celebration of Pick Up PA and Earth Week. SGP can assist with planning and securing cleanup materials such as bags, gloves, and safety vests. Interested communities are encouraged to reach out to SGP via email – [info@susquehannagreenway.org](mailto:info@susquehannagreenway.org).

[LEARN MORE](#)



## **Why Small Towns are Becoming More Desirable**

What exactly does COVID-19 mean for our River Town communities? Despite the challenges, our small towns along the Susquehanna are experiencing a silver lining amidst the pandemic.

[LEARN MORE](#)



---

## Partner News

---



### **Future Plans for Shikellamy Marina Building**

DCNR reveals future plans for Shikellamy State Park's long-vacant marina building. [LEARN MORE](#).



### **Bald Eagle Valley Trail Updates**

The Clinton County Commissioners provide updates on plans for the Bald Eagle Valley Trail, including information on an exciting bridge conversation. [LEARN MORE](#).

### **Park & Trail News for Montour County**

The Montour Area Recreation Commission releases the latest updates for parks & trails of Montour County! [LEARN MORE](#).



### **New Acreage Added to Preserve in Marietta**

The Lancaster Conservancy acquires an exciting new 70-acre addition in Marietta for the Hellam Hills Nature Preserve! [LEARN MORE.](#)



### **Paddlers Complete the Susquehanna River**

Another group of intrepid paddlers tackles the 444 miles of the Susquehanna River's main stem from Cooperstown, NY to the Chesapeake Bay, MD. [LEARN MORE.](#)



### **Poll Shows the Importance of the Outdoors**

The Department of Conservation and Natural Resources (DCNR) releases poll results indicating that time spent outdoors ranked high in importance to Pennsylvanians during the pandemic. [LEARN MORE.](#)



### **COVID-19 Trail Impact Research Update**

The Pennsylvania Environmental Council (PEC) reports out on the trail increases seen during the 2020 season as a result of the COVID-19 pandemic. [LEARN MORE.](#)

---

## **Grants & Workshops**

---

### **POWR Announces Sojourn Grants | *March 15 Deadline***

The Pennsylvania Organization for Watersheds and Rivers (POWR) has announced the opening of the 2021 Pennsylvania River Sojourns Grant cycle. Grants are available on a competitive basis for single and multi-day paddling events on Pennsylvania Rivers. [LEARN MORE.](#)

---

The National Environmental Education Foundation (NEEF) is pleased to announce \$128,000 in grant funding to support public lands that have been impacted by increased use during the COVID-19 pandemic. [LEARN MORE.](#)

### **Community Watershed Organization Training | Begins on February 11**

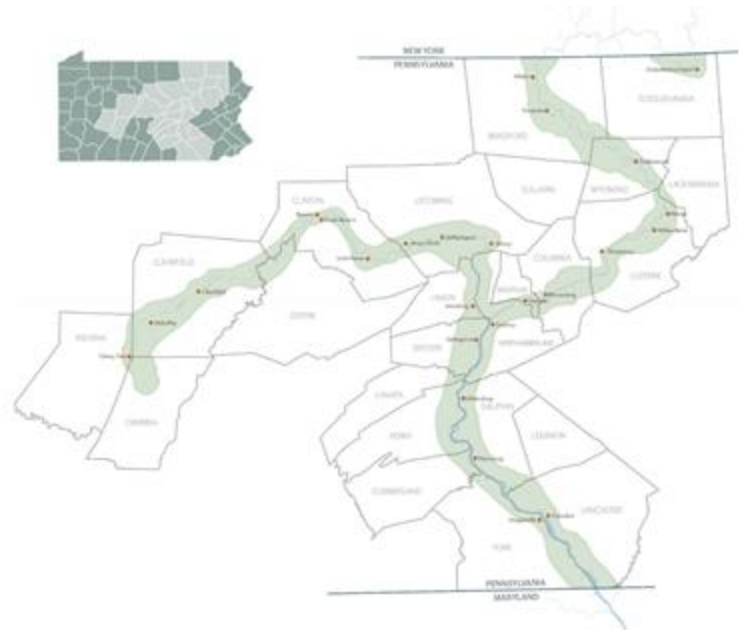
The Pennsylvania Organization for Watersheds and Rivers (POWR) is launching a three-part training through which Community Watershed Organization volunteers and leaders will gain the knowledge, understanding, and skills necessary to effectively participate in many local and regional policy, land use, and planning efforts occurring throughout the commonwealth. [LEARN MORE.](#)

## **ABOUT THE SUSQUEHANNA GREENWAY**



The Susquehanna Greenway is a connected corridor of paddling, walking, and biking trails, boat launches, conserved lands, and communities that runs along the Susquehanna River in Pennsylvania.

The Susquehanna Greenway Partnership (SGP) is a 501(c)3 non-profit dedicated to advancing the vision of the Susquehanna Greenway. SGP works with partners to grow the network, inspire people to engage with the outdoors, and transform communities into places where people want to live, work, and explore.



### **Ways to Support the Susquehanna Greenway**



[Donate  
Directly](#)



[Become an  
Ambassador](#)



[Become  
a Steward](#)



[Visit the  
SGP Store](#)



[Vote  
with Target](#)



[Shop  
Amazon  
Smile](#)

## Special Thank You to Our Supporters



## Let's Stay Connected!



Forwarded this email? Sign up to receive news of the Susquehanna Greenway [here](#).

[To safely unsubscribe, please click here](#) | [Spam Policy](#)

This email was sent to edowney@susquehannagreenway.org by info@susquehannagreenway.org  
Susquehanna Greenway Partnership | 301 Market Street, Unit 649 | Lewisburg | PA | 17837

 [Powered by Trail Blazer](#)