



## Susquehanna *Healthy, Sustainable Susquehanna Communities*



The Susquehanna Greenway is a planned corridor of interconnected trails, parks, river access points, and conserved areas, linking people to the natural and cultural treasures of the Susquehanna River and its West Branch. Nearly 500 miles in length, it is one of our state's greatest resources -- balancing the needs of generations today and tomorrow, conserving the environment for all living things, and creating healthy, sustainable communities.

### Susquehanna Greenway Partnership

[Our Website](#)

[Donate Now](#)

[Volunteer](#)

[Email Us](#)



### In This Issue...

[Join Us In Creating the Susquehanna Greenway](#)

[Treasured Towns & Landscapes Photo Contest](#)

[New Connections to Susquehanna River Walk](#)

[Genetti Hotel Hosts New Bikeshare Program](#)

[PA Projects Highlighted in Great Outdoors Report](#)

[Susquehanna River Towns Face Pressing Issues](#)

### Join Us In Creating the Susquehanna Greenway Your Contribution Means a Healthier Future

The Susquehanna Greenway Partnership provides assistance to many local partners to create new trails and parks in their communities, and conserve our natural resources and cultural heritage. If you believe, like we do, that our land and water resources must be protected and enhanced to ensure that we have a healthy and prosperous future, we ask that you show your support for our work by becoming a member. Your contribution will help to create green collar jobs constructing parks, trails and river accesses. It will help to increase property values and minimize future flooding through green infrastructure improvements. The bottomline is that if we want our communities to be the types of places where families and young professionals want to live, where new businesses want to locate, then we must invest in greening our communities. Your investment in the Susquehanna Greenway Partnership is an investment in the future of our river towns and future generations. Please [click here](#) to join today.

Thank You!

Trish Carothers, SGP Program Director



### Treasured Towns & Landscapes Photo Contest Submit Your Susquehanna Places and People



Do you have a photo that tells a story of the Susquehanna, or celebrates the river, her towns and people? The Susquehanna Greenway Partnership

[SGP Interns Present Poster to Legislators](#)

[Flood Damage Loans Available  
Flood Recovery Resources for  
Old and Historic Buildings](#)

[A Lesson in Helping Others](#)

[Celebrating Improvements to  
Water Quality](#)

[Water Quality Volunteers  
Needed](#)

[Got Drugs?](#)

[Exploring Our Water Trails](#)

[Organizations Can Intervene in  
Suit Challenging Bay Restoration](#)

[River Experience Event a  
Success!](#)

[Prof. Daniel Jones](#)

[Researcher's on the River](#)



invites you to enter your town, landscape, and wildlife photos to our 2nd *Treasured*

*Towns and Landscapes* digital photography competition! We're looking for high quality photos that represents the diverse cultural and natural resources within the Susquehanna Greenway, a corridor of trails, parks, river access points and vistas that follows the North Branch, West Branch, and main stem of the Susquehanna River. Submit your eligible digital images in one of four categories: Treasured Towns; Treasured Landscapes; Wildlife; Youth Entry (for photographers under 18). Winners will receive cash prizes from \$50 to \$200 and have



### **Our Mission**

The Susquehanna Greenway Partnership is a leading champion for the Susquehanna River Watershed, Pennsylvania's most important natural resource and the largest tributary to the Chesapeake Bay. We advocate for public and private efforts to connect people with our natural and cultural resources, and promote a sustainable and healthy environment.

### **Volunteers Needed**

We are looking for volunteers who want to make a difference. If you are interested in helping with a local Greenway project, or would like to assist SGP with an event, photography, office work, grant research, social networking, then go to our website and [click on volunteer](#).

### **Susquehanna Greenway Regional Organizations**

[North Branch  
Endless Mountains Heritage  
Region](#)

[Middle Susquehanna and  
Lower West Branch  
SEDA-COG Community  
Resource Center](#)

[Upper West Branch  
Pennsylvania Environmental  
Council](#)

[Lower Susquehanna  
Susquehanna Gateway Heritage  
Area](#)

### **Upcoming Events**

[Annual Pumpkin Festival  
Catawissa  
October 28-29](#)

[Annual Lancaster/Lebanon  
County Watershed Forum  
Lancaster  
October 29](#)

[Mini-Photo Workshop  
Harrisburg  
October 29](#)

[Annual Catawissa Halloween  
Parade  
Catawissa  
October 29](#)

their photos included in a photo gallery that will travel throughout the greenway. [Click here](#) to see last year's winners, submit your entry, and for [official rules and forms](#).

### **New Connections to Susquehanna River Walk Unveiling New Trails and Art in the Williamsport Area**

A special unveiling event took place on October 7 in conjunction with Williamsport's usually First Friday celebration. Community leaders and cyclists gathered at the Genetti Hotel where a bike share program, a new public art sculpture along the River Walk, an extension of the River Walk Trail to the South Williamsport Sports Complex, and *Walkable and Bikeable Communities Master Plan* for Williamsport were all unveiled.



Brian Auman, SEDA-COG Community Resource Center (CRC) presented the master plan for improving bike and pedestrian access to the Susquehanna River Walk, and streetscape projects that promote walking and traffic calming. Lycoming County Transportation Planner Mark Murawski explained that the purpose of the project is to enhance pedestrian and bicycle connectivity between major destinations in the Williamsport area, and would ideally include a connection to the sixty-mile Pine Creek trail system, as well as the historic community of Muncy. Susan Browning of Susquehanna Health explained how people can lose weight by walking and biking daily. Connections like these create healthier communities and are also an opportunity to encourage economic and community development by attracting visitors and businesses looking for a small city with outdoor amenities. These improvements fit into the larger Susquehanna Greenway strategy to make river towns more livable destinations with over 500 miles of connected parks and trails. loss and improve health.

After the presentation of plans over 40 community leaders took to their bikes for a ride around the city. The first stop was to see Susquehanna Health's hospital expansion and hear about its Pathways to Health initiative. The second stop was in South Williamsport where a new fish sculpture is being created for the River Walk as part of the Public Art Academy's 10 year project to create art work related to the river. At the next stop Diane Kripas of DCNR and Chris King of PennDOT discussed the importance of trail development and the need to continue funding of these community assets through federal and state transportation initiatives. Chris King pointed to the latest extension of the River Walk currently being constructed to reach the South Williamsport Sports Complex and explained that this would be the end of the

Out of the Ordinary Tales for  
Halloween  
Harrisburg  
October 29

project unless transportation enhancement funding is renewed. The *Walkable Communities* project is supported by the Appalachian Regional Commission, City of Williamsport and Lycoming County Planning and Community Development. Partners have included SEDA-COG, PennDOT,

Scary & Scandalous: The Dark  
Side of Town  
Mifflinburg  
October 30

Beautiful Birds-Mommy and Me  
Naturally  
Tunkhannock  
November 1-2

Homeschoolers' Day  
Harrisburg  
November 1

Young Explorers: Turkey Talk  
Danville  
November 3

Civil War Knitting Workshop  
Bloomsburg  
November 3

Stroll Through the Arts Weekend  
Lewisburg  
November 4-5

Energy Management Planning  
Pays Off  
Lewisburg  
November 4

Wilderness First Aid &  
Wilderness First Responder  
Recertification  
Bloomsburg  
November 5-6

3rd Annual 5K MAG Run  
Lancaster & York Co.  
November 5

DACC 5K-RTRS  
Danville  
November 5

Fall Cleanup at  
Dale/Engle/Walker Property  
Lewisburg

November 5

Community Market  
Bloomsburg  
November 5

At Home in the Woods: Keeping Warm  
Danville  
November 5

Iron Furnace Walking Tour  
Columbia & Marietta  
November 6

Weiser State Forest-Public Drive-Through  
Elysburg  
November 6

Heritage Day at Joseph Priestley House  
Northumberland  
November 6

If you would like to have an event included in our newsletter, please send event and contact information to:  
[info@susquehannagreenway.org](mailto:info@susquehannagreenway.org)

Williamsport City Council, Williamsport Bicycle Club, Newberry Elm Street program, the Susquehanna Greenway Partnership, and River Valley Transit.

### Genetti Hotel Hosts New Bikeshare Program



The sounds of cheery bicycle bells filled a conference room at the Genetti Hotel in Williamsport during the *Walkable/Bikeable Communities Plan* event on October 7. From the back of a brand new bicycle Hotel Manager, Marc Shefsky, announced the upcoming public bicycle share program that will be housed at the Genetti. According to Shefsky any community member, visitor or hotel

guest with a photo id will be able to visit the hotel lobby, sign out a bicycle, and cruise around town or along the river walk trail system before returning the bike to the hotel. Community members and members of the Williamsport Bicycle Club admired the new models and commented on their removable baskets, comfortable seats, and easy 3-speed gearing. A few of the bikes bear the name of the Genetti, the Williamsport Rotary Club, and a few private donors to recognize their sponsorship. If you want to help make this healthy community program possible and are interested in sponsoring a bicycle contact Marc Shefsky at (800) 321-1388 for more information.

### Special Thanks to Our Major Sponsors



### PA Projects Highlighted in Great Outdoors Report

#### Landscape Conservation in Lower Susquehanna and Urban Greening in Pittsburgh and Philadelphia

WASHINGTON — This week, just days before the release of a 50-state report outlining some of the country's most promising ways to reconnect Americans to the natural world, Secretary of the Interior, Ken Salazar, highlighted two projects in the state of Pennsylvania that will be included in the final report — representing what states believe are among the best investments in the nation to support a healthy, active population, conserve wildlife and working lands, and create travel, tourism and outdoor-recreation jobs across the country. Landscape conservation and expansion of recreational facilities on the lower Susquehanna





River and urban greening in Pittsburgh and Philadelphia are among 100 projects nationwide that will be highlighted in next week's report — two in every state — as part of President Obama's America's Great Outdoors initiative to establish a 21<sup>st</sup> century the surrounding communities as part of close engagement with Gov. Tom Corbett and the state of Pennsylvania, as well as private landowners, local- and tribal-elected officials, community organizations and outdoor-recreation and conservation stakeholders. The full 50-state report will be released in the coming weeks.

"Under the America's Great Outdoors Initiative, we are listening to the people of Pennsylvania and communities across America and working with them on locally-based projects that will conserve the beauty and health of our land and water and open up more opportunities for people to enjoy them," Salazar said. "My staff and I have been asking each governor for the most promising projects to support in their states, and we will do all we can to help move them forward."

[Read More...](#)

### Susquehanna River Towns Face Pressing Issues



Community leaders, professors, and students convened at Bucknell University on October 14-15 for the Susquehanna River Symposium address issues that affect towns along the Susquehanna. SGP presented information its Susquehanna Greenway River Town Initiative, a program to recognize and assist communities that value the river as an asset for sustainable economic development and healthy living. SGP hosted a panel on "Investing in River Town Revitalization and Economic Development" that highlighted opportunities for redevelopment and investment through organizations like The Progress Fund, PENNVEST, PA Downtown Center, and DCED. The event included a Native American honoring ceremony for the Susquehanna River Historic Trail project. Other panels tackled issues on the impact of natural gas development on communities, housing pressures, and the need for connected social services. The symposium was an event of the Nature and Human Communities Initiative of the Bucknell University Environmental Center.

Don't worry if you missed it this year. The complete agenda can be found [here](#). Presentations from this year's symposiums can

be found [here](#). Save the date for next year's symposium **October 12-13, 2012** which will discuss the impact of floods on the Susquehanna watershed from the prehistoric to the present.

---

### **SGP Interns Present Poster to Legislators** **'Undergraduate Research at the Capitol' Event**

SGP interns, Bryan Heritage, a fifth-year Architecture student, and Abigail Thomas, a fifth-year Landscape Architecture student, presented a poster as part of the Undergraduate Research at the Capitol (URC) event. URC gives college students engaged in research or scholarship an opportunity to present posters about their work at the Capitol Building, and for students and faculty mentors to meet with legislators and their staffs.



The students' poster, *The River Town Assessment Tool: A Process to Revitalize River Towns in the Susquehanna Valley*, showcases their work on the River Town Assessment process, a joint program of the Hamer Center for Community Design at Penn State; the Susquehanna Greenway Partnership; and SEDA-Council of Governments (SEDA-COG). As Hamer Center interns this past summer Heritage and Thomas worked with the River Town Project's partners to finalize the assessment process, which provides direction for communities' long-term sustainable development as river towns. They then worked with stakeholder groups in Shickshinny and Montgomery to pilot test the tool, using it to create designs that reflected the community members' visions.

[Read more...](#)

---

### **Flood Damage Loans Available** **Businesses and Non-Profits**

Luzerne County has a loan program that may be an option for businesses that need to borrow money to repair damage caused by tropical storms Irene and Lee, county officials said. About \$9 million in loan funding is available to attract new businesses and retain existing ones. County Community Development Director Andrew Reilly, who oversees the loan program, said "The county loan program may fit some businesses' needs, but for others the Small Business Associate (SBA) loan is going to be a better option for them," who advises businesses to first explore SBA loans.

Some private nonprofit organizations may also be eligible for SBA low-interest-rate disaster loans to help them recover from damages caused by Tropical Storm Irene that occurred Aug. 26-30. Organizations in 10 counties, including Luzerne and Wyoming, may be eligible. Examples include, but are not limited to, food kitchens, homeless shelters, museums, libraries, community centers, schools and colleges.

Read more from the [Times Leader](#). *Photo credit: Michael J. Mullen*

---

## Flood Recovery Resources for Old and Historic Buildings



How do owners of old or historic homes and buildings deal with reconstruction and recovery from the ravages of Septembers flooding? Preservation Pennsylvania has some great resources available at the website including a checklist of things to do, tips

for foundations, and a publication *[Treatment of Flood-Damaged Older and Historic Buildings](#)*. They are also maintaining a list of properties that have been damaged by the storms so that they can lobby Congress for more funding. They will provide free technical assistance to anyone who requests it. Find out more at [Preservation PA](#) or contact (717) 234-2310 or [info@preservationpa.org](mailto:info@preservationpa.org). Get facts on the National Flood Insurance Program [here](#).

---

## A Lesson in Helping Others

Frania Holloway was an incoming freshman at Wilkes University in 1972. The day before the Susquehanna overflowed, she had come to campus to register for classes and was anxious to spend some time on campus, but her father cut the trip short to return to their home in



Connecticut. “My father said we’ve got to leave, I don’t like the looks of the river,” she said. “We saw the National Guard trucks coming in on the highway as we were leaving, so I knew it was serious. The next day, he came to where I was working at the time and said your college is under water.”

Holloway’s college experience was marked indelibly by the flood and the community she saw pull together around her in



disaster's wake. So when flooding struck again this year, and Wilkes canceled its homecoming parade in favor of a community service project, she decided to join in. Holloway was one of about 25 volunteers packing boxes of food at the Commission on Economic Opportunity's Weinberg Regional Food Bank in Wilkes-Barre.

The volunteer effort was organized by a group of Wilkes alumni and the Wilkes Office of Community Service in lieu of a homecoming parade. Besides packing lunches for the elderly at CEO, which has acted as a distributor of donated food for flood victims, Wilkes alumni, students and faculty also helped clean at the West Pittston home of Mary and John Dunnigan.

Read more in the [Times Leader](#). *Photo credit: Pete G. Wilcox*

---



An increasing number of local governments throughout Pennsylvania are voicing support for efforts to restore state funding for Growing Greener, the Renew Growing Greener Coalition announced today.

More than 100 municipalities and 26 counties – representing more than 6.5 million Pennsylvanians – have adopted resolutions in support of the program, with the following municipalities joining the list of supporters this week:

- East Berlin Borough, Adams County
- Menallen Township, Adams County
- East Rockhill Township, Bucks County
- Lower Pottsgrove Township, Montgomery County

In addition, the Tioga County Commissioners this week adopted a resolution in support of Growing Greener.

“Elected leaders across the Commonwealth know the tremendous value Growing Greener has brought to their local communities,” said Andrew Heath, Executive Director of the Renew Growing Greener Coalition. “As the legislature deliberates over an impact fee on natural gas drilling, the Coalition urges lawmakers to heed the public and allocate a significant portion of revenues to Growing Greener so that future generations have access to clean drinking water, fresh air, parks, trails and green open spaces.”

Growing Greener is a bipartisan program established in 1999 under Governor Tom Ridge and later expanded by Governors Schweiker and Rendell. Since its establishment, Growing Greener has created a legacy of success, preserving more than 33,700 acres of Pennsylvania's family farmland, conserving more than 42,300 acres of threatened open space, adding 26,000 acres to state parks and forests, capping more than 2,100 abandoned wells and restoring over 16,000 acres of abandoned mine lands.

"We must renew Growing Greener if we want to continue to conserve land, create parks and trails that are so important to our quality of life within the Susquehanna watershed," said Trish Carothers, SGP Program Director. "I urge everyone to contact their State Legislators and ask them to support Renew Growing Greener."

[Read More...](#)

To learn more about the Renew Growing Greener Coalition [click here](#).

---

## Celebrating Improvements to Water Quality West Branch Susquehanna River

Trout Unlimited (TU), the nation's largest coldwater conservation organization, the PA Fish and Boat Commission (PFBC), and the PA Department of Environmental Protection (DEP) celebrated improvements to the West Branch Susquehanna River and its many tributaries and



publication of *The West Branch Susquehanna Recovery Benchmark Project: A Technical Report* at an event October 24 at Hyner View State Park. The goals of this ambitious evaluation were to provide documentation of water quality conditions on a watershed-scale, substantiate anecdotal fishery improvements in the river, and provide baseline documentation of benthic macroinvertebrate populations and habitat conditions in Acid Mine Drainage impacted tributaries.

To accomplish these goals, TU and its partners targeted 90 sites throughout the watershed and collected water quality and benthic macroinvertebrate samples, measured stream flows, conducted habitat surveys, and assessed fish populations over a five-month period. The study shows that the overall health of the watershed is greatly improving compared to 25 years ago. Fish and insect populations have increased, and water quality and habitat have improved. "Today marks a milestone in the recovery of the West Branch," said PFBC Executive Director John Arway. "This reach of the Susquehanna River has been long considered

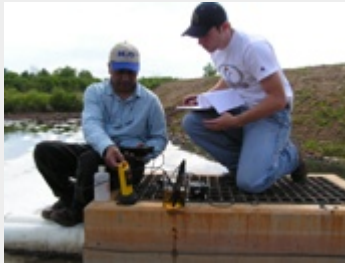
polluted and beyond repair, a casualty of acid mine drainage. It has taken decades of remediation driven by volunteer groups like TU, state and federal government agencies that provide the funding and industry which now treats wastewater to today's standards. As a result, the West Branch has responded and I am pleased to declare that it is now fishable again."

[Read more...](#)

---

## Water Quality Volunteers Needed

### Coldwater Conservation Corps



Are you an angler, hunter, or someone who has concerns about Marcellus shale gas drilling in your area? The PA Council of Trout Unlimited hosts the Coldwater Conservation Corps, a volunteer group who conducts stream surveillance and water quality sampling to ensure that the state's waters are better protected and that impacts from gas drilling are better monitored and understood. To learn more or get involved contact [Dave Sewak](#), TU Marcellus Shale Field Organizer at (814) 659-1772.

---

## Got Drugs?

### National Drug Take-Back Day Oct 29

The federal Drug Enforcement Agency announced that it will conduct a Third Nationwide Drug Collection Day to collect unwanted, expired, and unused drugs on **October 29 from 10am to 2pm**.

Scientific evidence shows that a growing number of pharmaceuticals and personal care products (PPCPs) are ending up in waterways across the country. While the potential for harm to human health is not known at this time, because drinking water is drawn from these same sources, there is a growing concern about how these drugs and other substances may be affecting people, especially with long-term exposure. To protect drinking water and public health, it makes sense to stop flushing these products, and find alternate disposal methods. Local police departments are partnering with the DEA to host collection sites across the nation until a long term solution can be developed.



To find a collection site near you [click here](#).

---

## Exploring Our Water Trails

### Expedition Chesapeake Hosts Jeff Corwin



Although high water kept them off the river, it didn't deter SGP's, Bridget Kane and Board Member, Marel Raub from attending a gathering for Expedition Chesapeake, which is a unique and comprehensive project that will immerse people in the past, present and future of the

Chesapeake Bay watershed. Representatives from the Susquehanna Greenway Partnership, The Whitaker Center, DCNR, DEP, PA Fish and Boat Commission, Chesapeake Bay Foundation, Northcentral PA Conservancy, and others gathered September 28 to learn about the natural and cultural resources along the lower Susquehanna River.

Expedition Chesapeake is a multi-media educational and entertainment experience anchored by a Large Format film, which is designed to educate and inspire the 17 million residents of the Chesapeake Bay watershed to become better stewards of this national treasure. Jeff Corwin (in photo), host of the *Jeff Corwin Experience* and narrator of the film, was able to join the Expedition Chesapeake group. To learn more about this unique and comprehensive project that will immerse people in the past, present and future of the Chesapeake Bay watershed [click here](#).

---

## Organizations Can Intervene in Suit Challenging Bay Restoration

The Chesapeake Bay Foundation and other groups can join a court fight over bay restoration efforts, a federal judge in Pennsylvania ruled Thursday, October 13. The bay advocacy group, other environmental organizations and associations representing sewer authorities asked to side with the federal Environmental Protection Agency as defendants in the suit. The American Farm Bureau Federation sued the EPA in January over the stricter federally led effort and other groups have since joined the challenge. Critics say it is too far-reaching and will burden states with huge costs. U.S. District Sylvania H. Rambo said the groups may help settle the complex case. "In fact, given the complexity and voluminous size of the administrative record, which includes scientific models, the court finds that the presence of the intervenors may serve to clarify issues and, perhaps, contribute to resolution of this matter," Rambo said in her order.

To read the full Associate Press article [click here](#).

---

## River Experience Event a Success!

Over 125 river and heritage enthusiasts flocked to the banks of the Susquehanna River at Wrightsville to support the Susquehanna Gateway Heritage Area (SGHA) during their annual River Experience



fundraiser. SGHA promotes the preservation, conservation and interpretation of the Susquehanna River's cultural and natural heritage in York and Lancaster Counties, and works to build the Susquehanna Greenway as SGP's regional lead organization and water trail manager for the lower Susquehanna River. Supporters enjoyed live music, local food, and bid ever so silently on original art and local gift certificates. Find out more about SGHA's work and the lower section of the Susquehanna River Water Trail [here](#).

*Photo credit: Dana Shirey, River Studios*

---

## Meet Our Board

### Prof. Daniel Jones



Daniel Jones grew up in upstate New York where he could walk to the Susquehanna River and spent his time learning by observing. This has fostered his appreciation for the river and is one of the reasons he serves on the Susquehanna Greenway Partnership's Board of Directors. He now passes that knowledge onto his students at Penn State University in

the Department of Landscape Architecture, and has spent over 40 years working in the fields of park planning, urban design, and urban redevelopment, and has conducted more than one dozen river evaluation studies in PA. He frequently is involved in the consideration of landscape corridors, with intentions of conserving, connecting, and enhancing their resources.

Jones believes, "The Susquehanna River is a memorable asset to people who can live near it, view it, float on it, fish in it, dream about it. The river is also a source of anxiety when it rises to levels that threaten human activities. To serve an organization that seeks to promote responsible relationships with the Susquehanna River is exciting." He also finds traveling by canoe to be a source of adventure and education. "I have connected canoe travel to teaching, to consulting, to hunting, to fishing, to camping, to family activity, to racing, to groups and to solitude," he says.

---

## Researcher's on the River

**Mohamed Khalequzzaman, Ph.D.**

Prof. Khalequzzaman, also known as Dr. K, is a Professor of Geology and Physics at Lock Haven University. He has been continuously monitoring the impact of agricultural activities on water quality in Fishing Creek since 2002. Along with local watershed organizations, the Clinton County Conservation District and students, Dr. K has been analyzing the water for nutrients, sediments and pollutants.



Since 2006, he has had research taking place at the Avery Big Run acid mine treatment facility in the Beech Creek Watershed to evaluate the long-term effectiveness of the facility itself and its impact to the receiving stream, Middle Branch of Big Run. They have found that although the treatment process does raise the pH and facilitates reduction in metals of the water it collects, the effectiveness of the facilities has declined measurably since it went online.

*Read more...*

---

Please visit our website at <http://www.susquehannagreenway.org/>  
[Click here to donate to our cause](#)