

## River Town E-Connections; January 2021 [Test 1]

Susquehanna Greenway Partnership <info=susquehannagreenway.org@tbmail2.com>

on behalf of

Susquehanna Greenway Partnership <info@susquehannagreenway.org>

Mon 1/18/2021 3:58 PM

To: Alana Jajko <ajajko@susquehannagreenway.org>

[JANUARY 2021](#)[FACEBOOK](#)[INSTAGRAM](#)[EMAIL](#)[DONATE](#)

---

## River Town Spotlight

---

### Get Out on the Greenway! On the First Rail Trail in the U.S.

Did you know that you can walk, bike, or run on the VERY FIRST rail trail in the U.S. right here in the Susquehanna Greenway? Join us as we explore a trail with a history in the SGP River Town of Danville.

[EXPLORE](#)

---

## River Town News

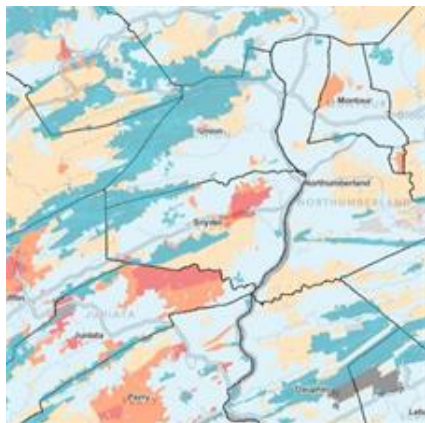
---



### Why Small Towns are Becoming More Desirable

What exactly does COVID-19 mean for our River Town communities? There is a silver lining amidst the pandemic.

[LEARN MORE](#)



### Is Your River Town in a High Need Area for Trails?

This great new resource uses maps & data to identify high-need areas for trails throughout Pennsylvania.

[EXPLORE](#)



### SGP River Towns Debut on our Interactive Map

Use our Interactive Online Map to explore trails, river accesses, river towns, and more! Click below to get started.

[EXPLORE](#)

## Workshops

### DCNR's Grant Funding for Partnership Projects Webinar | *January 28, 2021 at 10 AM*



This webinar will provide a general Partnerships Program overview to include eligible project activities, funding sources,

### The Pennsylvania State Association of Boroughs | *Times & Dates Vary*



The Pennsylvania State Association of Boroughs (PSAB) is a statewide, non-partisan, non-profit organization dedicated to serving 956 borough

matching requirements, and strategies on how to create a competitive grant application.

governments. Various trainings & webinars for municipalities & boroughs are available.

LEARN MORE

LEARN MORE

---

## Grant Corner

---

### **Community Conservation Partnership Grants** | *Open January 19 - April 14*

Be sure to read up on DCNR's 2020-2024 PA Statewide Outdoor Recreation Plan to see how your projects align with priority areas in preparation for the next Community Conservation Partnership Program grant round. [LEARN MORE](#).

---

### **Peer & Circuit Rider Grants** | *Open Year-Round*

These DCNR grant programs fund projects that help municipalities, counties, multi-municipal partnerships, and council of governments to increase local capacity for recreation, parks, and conservation. [LEARN MORE](#).

---

### **RecTAP Grants** | *Open Year-Round*

The Recreation and Parks Technical Assistance Program (RecTAP) is a statewide technical assistance service designed to help organizations receive expert advice on recreation, park, and trail issues. It is funded through DCNR and administered by the Pennsylvania Recreation & Park Society (PRPS). [LEARN MORE](#).

---

### **Greenways, Trails, & Recreation Program** | *Open February 1 - May 31*

This program allocates money for planning, acquisition, development, rehabilitation and repair of greenways, recreational trails, open space, parks, and beautification projects. It is funded through the Pennsylvania Department of Community & Economic Development (DCED). [LEARN MORE](#).

---

### **Watershed Restoration and Protection Program** | *Open February 1 - May 31*

Projects which involve the construction, improvement, expansion, repair, maintenance or rehabilitation of new or existing watershed protection Best Management Practices (BMPs) are eligible. It is funded through DCED. [LEARN MORE](#).

---

### **First Community Foundation Partnership Grants** | *Open Early 2021*

Projects in Lycoming, Northumberland, and Union counties are eligible for grants. [LEARN MORE](#).

---

### **Community Giving Foundation Grants** | *Open Early 2021*

Projects in Columbia, Lower-Luzerne, Montour, Northumberland, Snyder, and Union counties are eligible for grants. [LEARN MORE](#).



The EMHR's Partnership Grants program, also known as mini-grants, provide financial support to heritage partners across the four-county region of Bradford, Sullivan, Susquehanna, & Wyoming. [LEARN MORE.](#)

### ABOUT THE SGP



The Susquehanna Greenway Partnership (SGP) is a 501c3 non-profit dedicated to advancing the vision of a Greenway in Pennsylvania. SGP works to build connections along the Susquehanna River, inspire people to engage with the outdoors, and transform communities into places where people want to live, work, and explore.

The Susquehanna Greenway River Towns Program works with communities to envision, plan, and implement community-sourced projects that connect residents to the Susquehanna Greenway, create trails and river accesses, and celebrate their natural and cultural assets.



### Want to Show Your Support?



[Donate Directly to the Greenway.](#)



[Become a Volunteer Ambassador](#)



[Become a Water Trail Steward](#)



[Visit the SGP Online Shop](#)



[Vote with Target Circle](#)



[Shop with Amazon Smile](#)

### Special Thank You to Our Supporters



**pennsylvania**  
DEPARTMENT OF CONSERVATION  
AND NATURAL RESOURCES



**FIRST COLUMBIA**  
BANK & TRUST CO.  
*Every step of the way.*

**weis**



**CONTAINERS, INC.**  
64 River Road, Jersey Shore, PA 17740

Live the Region... Let Us Show You How!  
**Susquehanna**  
*life*

**CITIZENS'**  
Over a Century  
of Service  
**Electric**  
COMPANY



**WILLIAMSPORT**  
**SUN-GAZETTE**



**The Express** **UPMC Susquehanna** [Mirabito Brothers Properties](#)

## Let's Stay Connected!

Do you have news to share with us? Send us an email at [info@susquehannagreenway.org](mailto:info@susquehannagreenway.org) with the information, and we'd be happy to publish to our public online calendar or announce in the next newsletter.



**Forwarded this email? Sign up to receive news of the Susquehanna Greenway [here](#).**

---

[Susquehanna Greenway Partnership](#) | 301 Market Street, Unit #649, Lewisburg, PA 17837 | 570.478.0178

[To safely unsubscribe, please click here](#) | [Spam Policy](#)

This email was sent to [ajajko@susquehannagreenway.org](mailto:ajajko@susquehannagreenway.org) by [info@susquehannagreenway.org](mailto:info@susquehannagreenway.org)  
Susquehanna Greenway Partnership | 201 Furnace Rd | Lewisburg | PA | 17837

 [Powered by Trail Blazer](#)