



Greenway Trip: *Susquehanna Warrior Trail*



Photo by: Dan Shane

This 10.8 mile trail located in Luzerne County is nestled in the beautiful Susquehanna River Valley, lush with green meadows and surrounding mountain peaks. The trail stretches from the Talon Energy Riverlands in Salem Township to the Flamingo Diner in the West Nanticoke section of Plymouth Township

[Read More >>](#)

Greenway Tip: *Tick Tid-bits*

Welcome to the Team *SGP Hires Gail Kulp as New Executive Director*

The Board of Directors of the Susquehanna Greenway Partnership (SGP) are pleased to announce that Gail R. Kulp, CAE has been named the new Executive Director, effective Jan. 9, 2017.

As the new Executive Director, Kulp will oversee the staff and work with the Board of Directors to develop a new strategic plan to guide SGP in its second decade of work. She will liaise with local, county, state, and federal ...



[Read More >>](#)

6th Annual Photo Contest Opens *Show us your Susquehanna! Enter Now*

Did you know that deer ticks are active any winter day that the ground is not snow-covered or frozen? Well, now you do! Learn more about tick prevention through this infographic from our friends over at Get Outdoors PA.

[Read More >>](#)



Photo by Patrick Greenabaum of Lewisburg, PA.

Show us your Susquehanna! What Susquehanna River Town or special scene do you treasure? Submit your original photographs and share your stories in our annual Susquehanna Greenway Photo Contest!

Deadline for Submissions is June 30, 2017.

Cash Prizes awarded in each Category: \$150/ \$100/ \$50

- Treasured Towns
- Treasured Landscapes
- Susquehanna Adventures
- Youth: Under 18 years old

[Read More >>](#)

River Research

What is your bay footprint?

All things flow down river. In this tool from our friends at the Chesapeake Bay Foundation you can explore just how large or small your footprint is on the Chesapeake Bay.

[Read More >>](#)

Basics of Nature Photography

March 10, 2017 at Columbia Crossing

Join Susquehanna Heritage as they host Chris Arendt from the Camera Center of York for an introductory workshop on the Basics of Nature Photography. Learn the best techniques for taking scenic and creative outdoor shots and identify great locations to practice along the Susquehanna Greenway.

Deadline to register is March 9, 2017

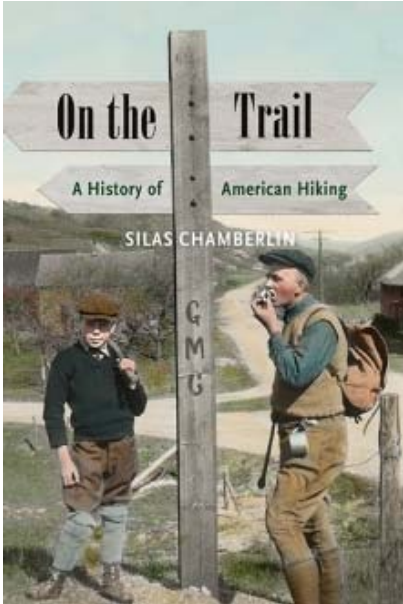
Cost: \$10

Columbia Crossing, 41 Walnut Street Columbia, PA 17512

GET TICKETS NOW!

River Reads

On the Trail



This book, written by PA author Silas Chamberline is the first full account of the unique history of the American hiking community and its rich, nationwide culture.

Silas recounts the activities of hikers who over many decades formed clubs, built trails, and advocated for environmental protection. He also discusses the shifting attitudes of the late 1960s and early 1970s when ideas about traditional volunteerism shifted and new hikers came to see trail blazing and maintenance as government responsibilities.

[Read More >>](#)

Feeding Birds

Month

Project FeederWatch

SAVE THE DATE

Scenes & Sips: Friday, April 28, 2017 6:00 - 7:30 PM



Mark your calendars for a night of fun, food, wine, and friends among the scenes of the Susquehanna Greenway Photo Contest. Attendees will enjoy free samples of Whispering Oaks Vineyards wine, hors d'oeuvres, and learn about Greenway projects in the area. Cost to attend: \$15/one person, \$25/two people

GET TICKETS NOW!

River Town News

Jersey Shore River Towns Team Back in Action



Photo by: Michelle Yost

February is national Feeding Birds Month. Project FeederWatch is a winter-long survey of birds that visit feeders at backyards, nature centers, community areas, and other locales in North America. FeederWatchers periodically count the birds they see at their feeders from November through early April. Data helps scientists track broad scale movements of winter bird populations.

[Read More >>](#)



The Jersey Shore River Town Team is back in action. Members will be meeting this month on February 16 at 6 PM at the Jersey Shore YMCA with SGP staff to discuss the priority areas for the community and a cohosted paddle/pedal event on June 17, 2017. This paddle/pedal event will have participants exploring the region's recreational and historic offerings including the Pine Creek Rail Trail, Pine Creek, and the West Branch of the Susquehanna. It is sure to be a great event, so mark your calendars and check back for more information.

Bridge Recycling? Historic Bridge Program



Does your trail need a bridge? Would you like to connect your trail with the region's heritage? Do you believe in the value of recycling and re-use? If so, you might

News from the West Branch: DCNR Awards Funds to Design Riverwalk Extension



Photo Courtesy PA DCNR, Pennsylvania Land and Water Trail Network Strategic Plan

The Susquehanna River walk extension in Williamsport, PA is one among [several projects](#) along the West Branch and statewide to be

consider acquiring and re-using a surplus state or locally owned historic metal truss bridge.

[Read More >>](#)

awarded PA DCNR grant funds this past quarter. The grant will provide Lycoming County with funding for preliminary design work for the trail which is slated to add an additional 2.4 miles from Maynard Street to the Susquehanna State Park.

[Read More >>](#)

Grant Corner

PA DCNR 2017 Grant Round Open



Harrisburg, PA: The 2017 PA DCNR Bureau of Recreation and Conservation grant round has opened. Grant applications will be accepted through April 12, 2017 at 4:00 PM

[Read More >>](#)

POWR 2017 Sojourn Grant Opens



The Pennsylvania Organization for Watersheds and Rivers (POWR) has announced the opening of the 21017 Pennsylvania River Sojourns Grant Cycle. Applicants can request \$900 per day for multi-day sojourns and \$500 for a single-day sojourn. Applications are due February 24, 2017

[Read More >>](#)

News from the North Branch: 2017 Heritage Grant Program Now Open



Photo by John Consiglio

The Endless Mountains Heritage Region (EMHR) has announced the opening of their 2017 grant round. Every year, EMHR solicits funding requests from local and regional non-profits and governmental organization for projects that advance the Heritage Region's Mission. Eligible projects and programs are those that support heritage tourism historic preservation, outdoor recreation, education and interpretation of heritage resources...

[Read More >>](#)

Get Outdoors PA

Middle Susquehanna News: *Union County Open Space Plan*

2017 Mini-Grant Open



Get Outdoors PA Mini-Grants fund equipment and/or staff training to become instructors for guided programs in its 16 activity categories. Grants requests of \$1,500 - \$3,000 will be accepted. Applicants must be Get Outdoors PA Community Partners.

[Read More >>](#)



Commissioners from Union and Lycoming counties and other trail partners conducted a field view tour of the proposed Allenwood to Montgomery trail last fall

The Union County Board of Commissioners recently adopted the County Greenway & Open Space Plan. An executive summary of the plan, in the form of a story map, is available by clicking [here](#).

The purpose the plan is to establish specific priorities for conserving open spaces such as farms, forests, community parks and waterbodies and for creating future greenway corridors...

[Read More >>](#)

DCED Act 13 Grant Round Opens



pennsylvania
DEPARTMENT OF COMMUNITY & ECONOMIC DEVELOPMENT

The Department of Community and Economic Development is currently accepting applications for Act 13 grants through the Commonwealth Financing Authority. Application deadline is May 31, 2017.

[Read More >>](#)

Lower Susquehanna News: 365 acres protected in Susquehanna Riverlands

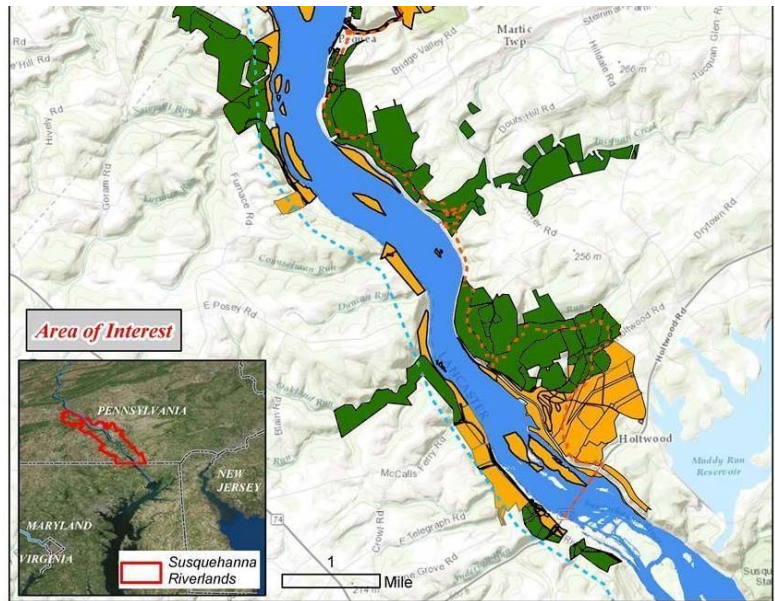


Photo Courtesy Kate Gonick

PPL Holtwood LLC/Talen Energy recently transferred 365 acres within the Susquehanna Riverlands in Lancaster and York County to the Lancaster County Conservancy for long-term protection. A

total of 13 tracts of land were transferred through donation and grant funding, including the final transfers of the Shenks Ferry Wildflower Preserve, Kelly Run and Pinnacle in Lancaster County and lands adjacent to Otter Creek in York County...

[Read More >>](#)

Help us create green corridors and revitalize river towns along the Susquehanna River; Donate or volunteer today!

DONATE
Online Now! 

A Special Thank You to Our Partners & Sponsors



[Susquehanna Greenway Partnership](#) / 201 Furnace Road / Lewisburg, PA 17837 / 570.522.7244

Would you like to forward this email to a friend? [Click here.](#)

Share This Email:      

[Remove my name from all future email correspondence](#)

Address postal inquiries to:
Susquehanna Greenway Partnership
201 Furnace Rd.
Lewisburg, PA 17837-8043

Powered By

Blackbaud eTapestry™ **Delivra**