



## **Healthy, Sustainable Susquehanna Communities**

Nearly 500 miles in length, the Susquehanna Greenway is one of our greatest regional resources. It is a corridor of parks, trails, river access points, and conserved areas, connecting people to the natural and cultural treasures of the Susquehanna River and its West Branch. The Susquehanna Greenway conserves the environment for all living things and balances the needs of generations today and tomorrow.

### Susquehanna Greenway Partnership

[Our Website](#)

[Donate](#)

[Volunteer](#)

[Email Us](#)



### In This Issue...

[Susquehanna Designated Connecting Trail to Capt. John Smith Chesapeake National Historic Trail](#)

[Keystone Funding Critical to Health of PA](#)

[June is National River Month!](#)

[Photo Contest Is Open!](#)

[Shickshinny Revitalization Efforts](#)

[Susquehanna Greenway River Town Mini-Grant Program](#)

[West Branch GeoTrail](#)

## **Susquehanna Designated Connecting Trail to Capt. John Smith Chesapeake National Historic Trail**

ANNAPOLIS, MD—Joined by National Park Service Director Jon Jarvis and other leaders in a ceremony on May 16 at Sandy Point State Park, Secretary of the Interior Ken Salazar designated four water trails as new historic connecting components of the existing Captain John Smith Chesapeake National Historic Trail.



The designation recognizes the significance of four connecting rivers—the Susquehanna, Chester, Upper Nanticoke and Upper James Rivers—to the history, cultural heritage, and natural resources of the 3,000-mile-long national historic trail in the Chesapeake Bay. The new river connecting trails are found in Delaware, Maryland, New York, Pennsylvania and Virginia.

“These river trails, totaling 841 miles in length, are closely associated with John Smith’s exploration of the Chesapeake Bay and its tributaries, including the American Indian towns and cultures of the 17<sup>th</sup>-century Chesapeake that he encountered,” said Secretary Salazar. “Incorporating these river segments into the national historic trail will increase public access, provide important recreation and tourism opportunities, and enrich exploration of the water routes in the entire Chesapeake watershed.”

**The Susquehanna River Component Connecting Trail** is a 552-mile system of water trails along the main stem and West Branch of the Susquehanna River in Maryland, Pennsylvania, and New York. Sections of the trail are managed by a variety of organizations and agencies, all of which support the component connecting designation. Overall coordination of the component is

[Sunbury RiverFront Almost Complete](#)

[Explore the Greenway Driving Tour](#)

[West Branch Sojourn & Stewardship](#)

[Volunteers Needed at June Event](#)

[Flood Cleanup Program Benefits Towns and Workforce](#)

[Public Input Needed for Park Plans](#)

[Millersburg Park Celebration](#)

[RR Improves River Access](#)

[River Reads](#)

[Researchers on the River](#)

[Meet Our Summer Interns](#)

[Donate & Celebrate River Month!](#)



### **Our Mission**

The Susquehanna Greenway Partnership is a leading champion for the Susquehanna River Watershed, Pennsylvania's most important natural resource and the largest tributary to the Chesapeake Bay. We work to advance for public and private efforts to connect people with our natural and cultural resources, and promote a

provided by the Susquehanna Greenway Partnership. The southern end of this trail links directly with the Captain John Smith Chesapeake National Historic Trail at Conowingo, Maryland.

"By linking our extraordinary landscapes and waterways to our country's history, the Captain John Smith National Historic Trail will support jobs and local economies across the region while providing unique opportunities for visitors to explore our cultural heritage while enjoying our natural resources," said Maryland Governor O'Malley.

Read more [here](#) and see our photos from the event on our [Flickr album](#). Check out the [new map](#) of connecting trails!

*Photo: Ken Salazar, Secretary of the Interior at the designation ceremony*

---

## **Keystone Funding Critical to Health of PA Contact Your Legislator Today**



The health of the people, environment and economy of the Commonwealth are dependent on clean air, clean water, and food produced right here in Pennsylvania on some of the most productive soils in the country. Air, water and food -- the essential elements of our existence -- should be

a top priority in our state budget. We need to invest in conserving and enhancing our natural resources in order to reap the dividends of a healthy future.

*Photo: The 228 acre Howland Preserve along the North Branch was preserved for public enjoyment and river access thanks to support from the Keystone Fund.*

The biggest cuts to conservation funding ever in Pennsylvania are proposed in the 2012-13 state budget, which will be finalized by the Pennsylvania General in the next week or two. If you care about clean air and water, productive farms and forests, please contact your State Representative and State Senator and let them know that conservation, park, and recreation funding is important to you. Ask them to restore the Keystone Conservation Fund 100% to its intended purpose for farmland preservation, conserving forests and natural areas, creation of parks and trails. Ask them not to divert this funding to the General Fund.

Agriculture and Tourism are Pennsylvania's two largest industries and they are dependent on productive farmland, our scenic natural areas, park and trails. It makes good sense to continue to invest in these important resources, the return on investment is clear. Keystone's funding stimulates and leverages \$2.28 of

sustainable and healthy environment.

### Volunteers Needed

We are looking for volunteers who want to make a difference. If you are interested in helping with a local Greenway project, or would like to assist SGP with an event, photography, office work, grant research, social networking, then go to our website and [click on volunteer](#).

### Susquehanna Greenway Regional Organizations

[North Branch  
Endless Mountains Heritage  
Region](#)

[Middle Susquehanna and  
Lower West Branch  
SEDA-COG Community  
Resource Center](#)

[Upper West Branch  
Pennsylvania Environmental  
Council](#)

### Upcoming Events

[Bluegrass Paddle](#)  
Tunkhannock  
June 2

[Designation Day](#)  
Duncannon  
June 2

[Spring Festival](#)  
Lock Haven  
June 2

[Paddling for Beginners](#)  
Elmira, NY  
June 2

[Clean Water Conference](#)  
Lancaster  
June 4 – 6

private and local investment for every state dollar expended. Businesses are attracted to vibrant communities that have trails and parks that employees and their families can enjoy.

Your politicians need to hear that you value these community resources! Please reach out to your legislators now.

- Find your [legislator's](#) contact information
- Print and send them a [standard letter of support](#)
- Or create a personal letter of support by identifying Keystone projects in your county that you treasure! See this [project list \(.pdf\)](#) or descriptions of [featured projects](#)
- After you send your snail-mail or make your call, tell us about it on our [Facebook](#) page and we'll send you a digital thumbs up for making our day!

Thank you for advocating for a healthy future for our Commonwealth!

Learn more about the importance of the Keystone Conservation Fund [here](#).

### June is National River Month!



Not only are rivers natural treasures, but they are *national* treasures as well. Every June River Month is celebrated across the country as folks get together to appreciate these amazing ecosystems. Our Susquehanna River provides opportunities for recreation,

wildlife viewing, quiet contemplation, and even artistic inspiration! It provides fresh water to over 6 million people and over 50% of the fresh water that sustains the Chesapeake Bay ecosystem. Hats off to you, Susquehanna! How will you enjoy show your appreciation for the Susquehanna River this month? Here are some ideas:

**Water Trails** – Explore the river through the Susquehanna's system of public river access areas. Whether you want to kayak, canoe, float, fish, or just get your toes wet, these public access areas are your key to connecting with the Susquehanna River. Explore these public areas on our interactive [Google Map](#) or learn more about river routes with printed maps available for each [water trail section](#).

**Land Trails** – June 2<sup>nd</sup> is National Trails Day! There are all sorts of wonderful trails and overlooks along the banks of the Susquehanna: The Williamsport Timber Trail and Riverwalk, the Towanda River Trail, the Capitol Area Greenbelt, even the Appalachian Trail in Duncannon! Learn more about trails near the

Riverfront Park Ceremony  
Millersburg  
June 6

Hiking Presentation  
Forty-Fort  
June 6

Boat Races  
Lock Haven  
June 9 – 10

Robbins Run  
Danville  
June 9

CMN Benefit Paddle  
Bloomsburg  
June 10

Fiddle Performance  
Danville  
June 10

Paddle Trip  
Montgomery  
June 10

North Branch Sojourn  
Cooperstown, NY  
June 14 – 17

Bluegrass Festival  
Cross Fork  
June 14 – 16

Sustainable Rivertownes  
Wrightsville  
June 14

Bike Tour & Festival  
Peckville  
June 16

North Branch Heritage Sojourn  
Wyalusing  
June 20 – 24

Wyoming Valley Riverfest  
Wilkes-Barre  
June 22 – 24

Susquehanna at DCNR's great trail website, [www.ExplorePATrails.org](http://www.ExplorePATrails.org). Or to find a trail event near you [click here](#).

**Susquehanna Sojourns & Guided Trips** – Organized, multi-day, educational paddle trips are a great way to learn about the river. Check out the North Branch Susquehanna Sojourn in NY June 13-17, the North Branch Moravian Heritage Sojourn June 20-24, and the Island Hopper educational paddle trip along the Middle Susquehanna June 23. Don't forget about your local outfitters, they often run interesting trips and are a great introduction to paddling!

**River Cleanup Events:** Help improve water quality, habitat, and natural beauty by volunteering at a cleanup event in your area, not to mention it's a great way to meet other people and a good excuse to spend an afternoon outside! The Susquehanna River Trail Cleanup is coming up soon on Saturday, June 2 in Marietta. From June 30 – July 1 Operation North Branch will be tackling cleanup from Laceyville to Tunkhannock and needs your help!

---

### Photo Contest Is Open!

Our 3<sup>rd</sup> Annual *Treasured Towns & Landscapes of the Susquehanna* Photo Contest is now open for your submissions! Learn more and submit your photos at [our website](#). See past contest winners [here](#).



This year there are four categories: Celebrating River Towns; Treasured Landscapes; People & The River; and a special Youth Category. Kids see the world in a very special way, and the Youth Category is just for them! We've teamed up with Hershey's Track and Field Games to invite kids to get outside, explore, and snap photos of what they treasure along the river and her towns. Prizes in each category include: First (\$150), Second (\$100), Third (\$50) and one Grand Prize winner will be chosen from the First Place finishers. The contest will close February 1, 2013 so be sure to grab your cameras on your next outing along the Susquehanna River. Interested in becoming a Contest Sponsor? – contact Bridget for more information and sponsorship options at [bkane@susquehannagreenway.org](mailto:bkane@susquehannagreenway.org)

Photo by Thomas Hawk

---

### Shickshinny Revitalization Efforts



In response to the devastating floods of 2011, the North Branch community of Shickshinny has formed Shickshinny Forward, a volunteer group dedicated

Great Island Triathlon  
Lock Haven  
June 23

Family Fun Festival  
Berwick  
June 23

Civil War Presentation  
Columbia  
June 28

North Branch Cleanup  
Laceyville  
June 30

If you would like to have an event included in our newsletter, please list your event at our [website](#).

### Special Thanks to Our Sponsors



to implementing community projects and flood mitigation techniques with help from other local partners.

The group unveiled the long term plan on May 22. It embodies the community's vision and mission of revitalization as well as the reduction of overall damage and impact from future flooding. This volunteer organization is focused on both the recovery of the greater Shickshinny area and the on-going revitalization of the community. This marks the culmination of thousands of volunteer hours and hard work on going in the past six months. Dale Freudenberger of the Delaware & Lehigh National Heritage Corridor also serves as the Susquehanna Greenway Coordinator for Luzerne and Lackawanna counties and has been involved with this planning and visioning process. Most recently Dale has been assisting in discussions to eventually linking the Shickshinny Warrior Trail with other trails in the Luzerne County area.



### Susquehanna Greenway River Town Mini-Grant Program *Grant Guidelines to be Announced June 20*

SGP will announce guidelines for a Susquehanna Greenway Mini-Grant Program on June 20, 2012. A total of \$60,000 will be awarded for competitive grants focused on projects that improve trail connections with the river, riverfront parks, river access, Susquehanna Greenway signs, or green infrastructure projects that help to protect the water quality of the Susquehanna River. Individual grant awards will be limited to a maximum of \$5,000 for Planning and Design Grants, and \$10,000 for Implementation Grants.

Projects must be located within a river community along the Susquehanna in these Pennsylvania counties: Susquehanna, Bradford, Wyoming, Lackawanna, Luzerne, Columbia, Montour, Northumberland, Cambria, Indiana, Clearfield, Centre, Clinton, Lycoming, Union, Snyder, Juniata, Perry, Dauphin, and Cumberland. Funding for this program is provided by the Pennsylvania Department of Conservation and Recreation (DCNR). A 50/50 match requirement applies to all projects, and the match cannot be from other DCNR funds. Eligible applicants must be a 501 (C)(3) non-profit organization that is registered with the PA Department of State Bureau of Charitable Organization.

Grant Guidelines will be posted on June 20 at [www.susquehannagreenway.org/project-funding](http://www.susquehannagreenway.org/project-funding)

### West Branch GeoTrail



Weis Markets

Woodlands Bank

Charge your GPS units and brush up on your navigation skills! SGP has received a mini-grant from the Lumber Heritage Region to work with local partners this summer to plan a geocaching trail along the West Branch Susquehanna Water Trail! This 228 mile stretch of river has been recognized by the National Park Service as a National Recreation Trail and is a great place for modern treasure-hunters to explore with their GPS units. Caches will lead participants to unique cultural, natural, or historic sites along the water trail and reveal unique stories at each location. Interested in becoming a project partner or sponsor? Contact Bridget for more information at [bkane@susquehannagreenway.org](mailto:bkane@susquehannagreenway.org).



Photo courtesy of Flickr.



### Sunbury RiverFront Almost Complete

The final touches to sidewalks and docks are just about all that remain for the Sunbury RiverFront complex. When complete, this riverfront project will combine flood protection with park and recreation services and facilities that benefit the recreational interest of residents, provide access to the Susquehanna River and Lake Augusta, and spur economic development. The project includes bank stabilization, greenway trail, seating areas, an amphitheater for outdoor events, street trees, and gardens. Read more about the project [here](#) and access the planning documents and maps [here](#).

### Explore the Greenway Driving Tour



The cultural history of the Susquehanna River is centuries long and the impact of the river is longer still when you consider geological time. These long days of summer are the perfect opportunity to download our free driving tour and get outside to learn about the Susquehanna River. The Greenway driving tour takes you back through time with a rich narrative history of human settlement and the geological formation the river and surrounding mountains. This tour will guide you on a 95-mile exploration of the Susquehanna Greenway to scenic view points and through charming river towns. Historic, economic, and geographic connections between the Susquehanna River corridor and the

Chesapeake Bay are revealed through a guide booklet and audio narration for each of 22 recommended stops. The guide booklet and audio narration can be downloaded for free at [our website](#). Don't forget your cameras (or our Photo Contest!) and enjoy the tour at your own pace.

*Photo by Steve Pensyl*

---

## West Branch Sojourn & Stewardship

Over 70 folks joined us on the West Branch Susquehanna Sojourn May 19-24 that paddled 85 miles from Curwensville to Renovo. Along the way we enjoyed amazing rural scenery, river canyons, and wildlife, as well as interesting presentations on history, water quality, acid mine drainage remediation, local tourism initiatives, and outdoor photography! Sojourners also partnered with GenOn Energy, Inc. employees from the Shawville power station to clean litter along 15 miles of the West Branch. Together, we pulled tires, plastic, and even a cash-counting machine (empty) from the river! Thank you Sojourn Partners and Sponsors including: DCNR, DEP, POWR, Lumber Heritage Region, GenOn Energy, Canoe Susquehanna, Clearfield County Conservation District, Visit Clearfield County, Clinton County Economic Partnership, Curwensville Lake, McCracken Canoe Sales & Rentals, Woolrich, and volunteers! Enjoy a few sojourn photos on our [Flickr page](#).



---

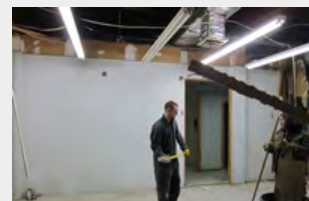
## Volunteers Needed at June Event

SGP is seeking volunteers to help staff our display at the CMVB Family Fun Festival in Berwick's Test Track Park either **Saturday, June 23** or **Sunday, June 24**. These outreach volunteers play a vital role in representing SGP by handing out information and answering general questions about our organization and our work along the Susquehanna. It is a fun way to support SGP, spend time in the community, and enjoy the tons of free exhibits and activities at this event. Email Erin at [epierce@susquehannagreenway.org](mailto:epierce@susquehannagreenway.org) for more information.

---

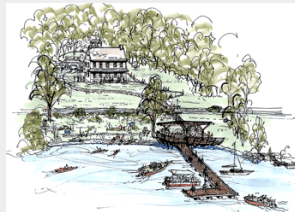
## Flood Cleanup Program Benefits Towns and Workforce

The Central PA Workforce Development organization has received a Disaster-Related national Emergency Grant to address the impact of flooding caused by Tropical Storm Lee in September



2011. Through the grant, out-of-work flood victims have been hired to provide clean-up and humanitarian support to public and non-profit agencies in central Susquehanna counties. Currently, 38 projects have been approved for flood clean-up work including debris removal, rebuilding fencing, raking, mulching, rebuilding of pathways in town parks, townships, boroughs, fire halls, little league fields, etc. Workers will also replace drywall and paint public buildings including libraries, fire departments and city halls that were impacted by the flood. Any public or non-profit worksites in need of flood clean-up work in Columbia, Montour, Snyder, Union, Lycoming, or Northumberland can contact Penny Hess at Career Link at 570-387-6288 x114 for more information.

*Photo: Workers help to restore a city-owned warehouse in Sunbury after the flood.*



### Public Input Needed for Park Plans

The York County Parks Department, York County Commissioners, and partners will be holding a public input session on Tuesday, June 19 in Wrightsville to discuss the development of the Susquehanna Heritage Park. The park complex includes the Native Lands County Park, Highpoint Scenic vista and Recreation Area, Zimmerman Center for Heritage, Klimes Run Park, and Wilton Meadows Nature Preserve. For more information see the [event flyer](#).

### Millersburg Park Celebration

Millersburg representatives will be sharpening their scissors this weekend in anticipation for the June 6 ribbon cutting ceremony to celebrate the Riverfront Park Gateway Project. The Riverfront Park: Gateway to the Lykens Valley Rail Trail project focuses on the trail head and the connection to the Susquehanna River. It consists of an asphalt path extending from Moore Street to Keystone Street, a focal gateway area at the intersection of River and North streets, and trees, benches, signage, and new landscaping. A new restroom/concession stand will provide service to the Millersburg Ferry Boat patrons as well as park and rail trail users. Learn about sponsorship opportunities for park fixtures at the [Borough website](#). Read about the Lykens Valley Rail Trail [here](#).



### RR Improves River Access





Norfolk Southern Corporation's spring volunteer day brought employees from the Enola Yard Diesel Shop to the Borough of Duncannon May 12th with enthusiasm and a back-hoe to help improve access points to the Susquehanna River in the downtown area. The railroad helpers pitched in

with assistance from Borough workers and community volunteers to help scrape sediment, even out the floor and clear brush and debris from under the railroad arches. They were finishing up just as the first batch of paddlers marched their boats down Ann St. to put-in under the arch on the beautiful day. "We're happy to help improve local access to the Susquehanna River under our tracks and strengthen ties with the communities where our people live and work," said NSCorp. Enola Diesel Shop Senior General Foreman, Archie Glace. This effort to improve river access was coordinated in preparation for Duncannon's upcoming Appalachian Trail Community designation celebration being held downtown on **Saturday, June 2nd**, an event which will invite hikers, paddlers, outdoor recreation enthusiasts and residents to enjoy the Duncannon area's recreational amenities.

*Photo by Mary Parry*

---

## River Reads

### *80 Miles of Wilderness Adventure*

In 1967 an intrepid troop of Boy Scouts and leaders set out on a wilderness canoe trip along the West Branch of the Susquehanna River. While we'll never know what tales were shared around their campfire, their route and sites along the way were documented in an exciting little book, *80 Miles of Wilderness Adventure: Chinklacamoose Canoe Trip – Clearfield, Pa. to North Bend, Pa.* by O. Lynn Frank. Full of West Branch history, old lumbering photographs, delightful hand-drawn maps, and even a sample menu, this book is a must-have for paddlers and history-lovers alike. The retro booklet has been reprinted and is available for \$6 plus shipping from the Clearfield County Historical Society. For orders and more information, you can reach the Society at 814-765-6125.



---

## Researchers on the River

River researchers have a new look! The Susquehanna River Heartland Coalition for Environmental Studies (SRHCES) is a unique partnership of local professors, students, and institutions dedicated to



studying the ecological conditions and processes in the Susquehanna River watershed. The group has just unveiled their new website where you can learn about their many projects including river monitoring, unassessed waters projects, and their teacher education program. You can also access many of the group's scholarly reports and write-ups on all sorts of water quality, fish, or river mammal studies.



*Photo courtesy of Dr. Cynthia Venn*



## Meet Our Summer Interns

### Brooke Gessner

SGP is happy to welcome Brooke Gessner as a summer SGP intern. Brooke is a recent graduate from Lycoming College, holds a degree in Business Administration with

concentrations in Finance and Marketing and minors in Accounting and Economics. Brooke says she chose this field of study because she felt that it was a well-rounded approach that would give her a wide breadth of knowledge to help her achieve her future goals. This fall, she will be attending the University of Delaware as a Master's candidate in Public Administration with an emphasis in Nonprofit Management. Brooke is assisting SGP this summer with research and resource development. Welcome Brooke! Next month: Meet Amber and Amy.

## Donate & Celebrate River Month!

Being the leading champion for the Susquehanna River Watershed is no small task and we cannot do it without the help of local partners and contributions from people like you who care about our future. We hope you



will consider making a donation to the Susquehanna Greenway Partnership to show your appreciation for PA's most important natural asset. Your contributions help us to be a stronger champion for the River, help us to create an environment that is attractive to business, and help us advocate for protection of our water, farmlands, and forests. We need your assistance to conserve, connect, and create healthy, sustainable Susquehanna communities. Click here to become a member of the Susquehanna Greenway Partnership! Thank you for your support.

*Photo by Craig Douglas Gephart*

Please visit our website at [www.susquehannagreenway.org](http://www.susquehannagreenway.org)  
Support Our Cause